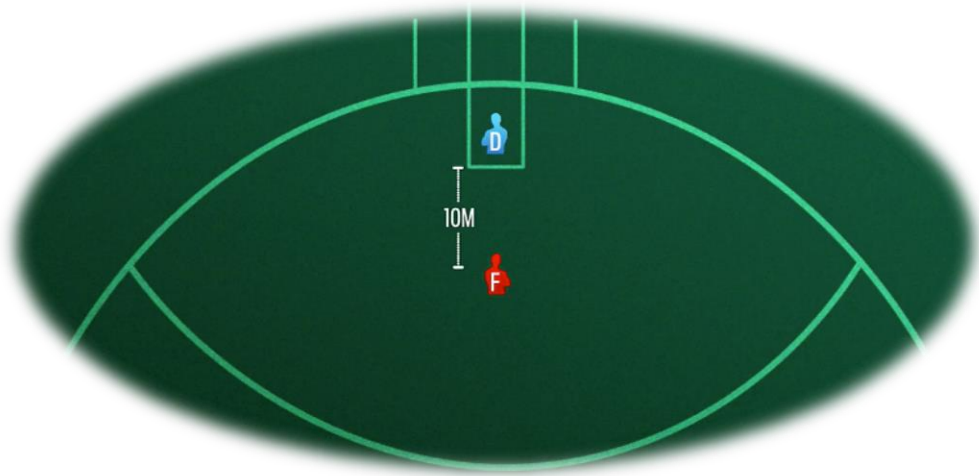
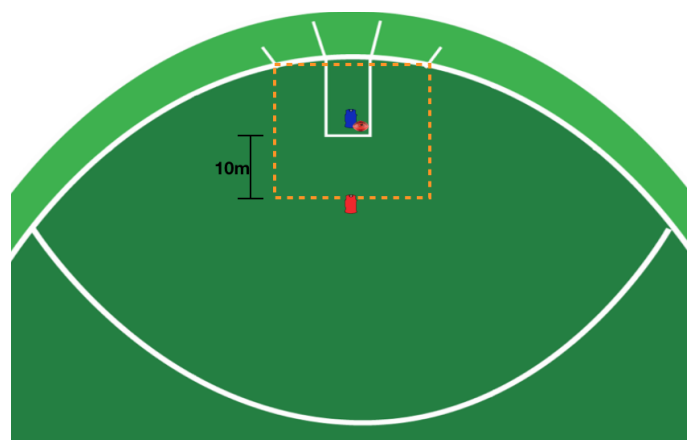
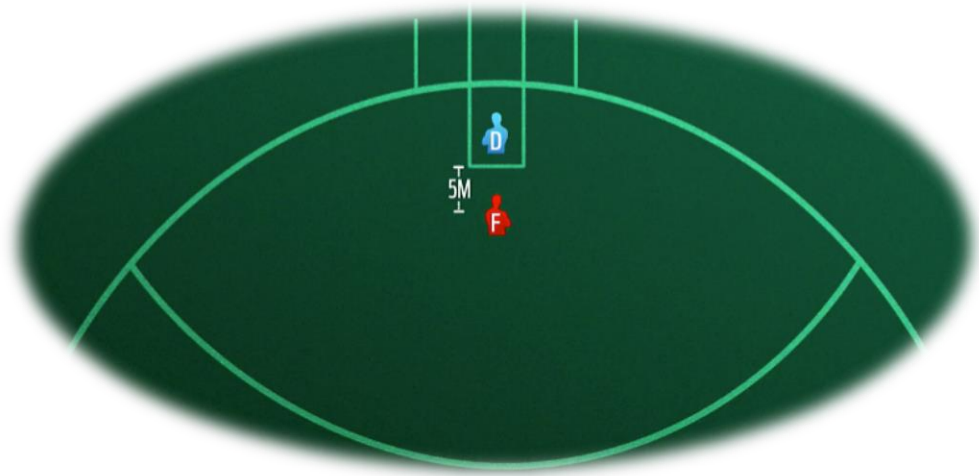




- For Kick-Ins from a behind, a player will no longer need to kick to their self to play on out of the goal square.
- Following a behind, the player on the mark will be positioned 10 metres from the top of the goal square (currently 5 metres)



- For all defenders who take a mark or gain a free kick within 9 metres of their own goal, the player on the mark for the attacking team will be brought in line with the top of the goal square.
- Umpires will use the term "back to the 9" when setting the mark inside 9m from the goal line.

